



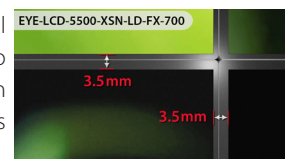
# EYE-LCD-5500-XSN-LD-FX-700

DIRECT-LED 55" VIDEO WALL LCD WITH 3.5 mm BEZEL  
AND 700 cd/m<sup>2</sup> BRIGHTNESS



## ) PRODUCT DESCRIPTION

The EYE-LCD-5500-XSN-LD-FX-700 is an extremely-super narrow bezel video wall LCD by eyevis with a brightness level of 700 cd/m<sup>2</sup>. With this new display type, the remaining bezel between two displays in a video wall could be reduced to a minimum of 3.5 mm. The new video wall displays provide a screen diagonal of 55 inch (139 cm) with full HD resolution (1920x1080 px). The newly developed electronics offer an optionally activatable non-sticking mode which prevents burn-in effects or image sticking effects caused by the prolonged representation of static image content.



## ) NEW FEATURES

### ▪ 4K Loop-Through

The new internal matrix scaler of the displays enables a loop-through of signals with up to 4K resolution.

### ▪ Simple Firmware Updates

The firmware of the displays can easily be updated. All displays within a video wall can be updated at once.

### ▪ Pixel Shifting (optionally activatable)

Continuous shifting of the entire image in different directions prevents image sticking. At normal viewing distance, this is almost not visible. If required by the application, the shifting area can be adjusted manually.

### ▪ Dynamic Pixel Refreshing (optionally activatable)

A special system driving the TFT cells avoids image sticking and increases display lifetime considerably.

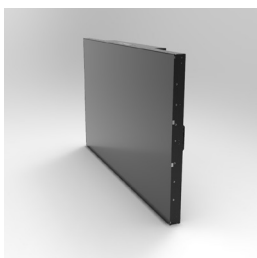
### ▪ Soft Picture Mode (optionally activatable)

An intelligent scaling mechanism smoothes out extreme contrast transitions. This process avoids the so called boundary line image sticking, which occurs at „sharp“ transitions (e.g. black to white). If required, the degree of „softening“ can be adjusted manually.

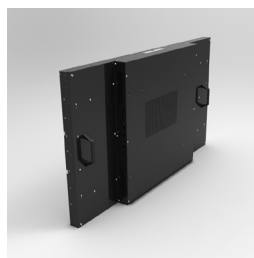
### ▪ Temperature Control System (optionally activatable)

Active temperature control, monitors the heat level and controls the fans.

## ) IMAGES



Front View

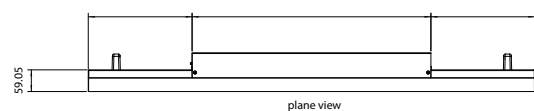
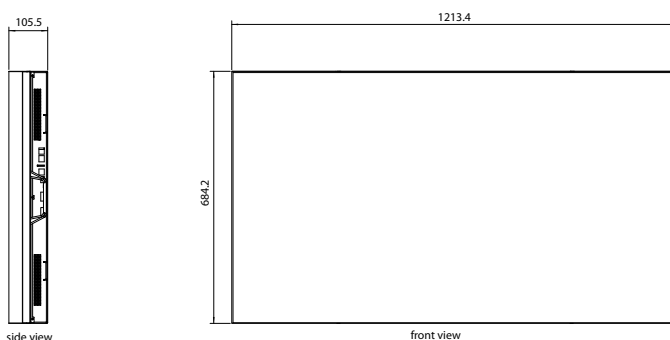


Rear View



Application

## ) DRAWING



Unit: mm



## EYE-LCD-5500-XSN-LD-FX-700

DIRECT-LED 55" VIDEO WALL LCD WITH 3.5 mm BEZEL AND 700 cd/m<sup>2</sup> BRIGHTNESS

### ) TECHNICAL SPECIFICATION

#### LCD PANEL

Model Name:	EYE-LCD-5500-XSN-LD-FX-700
Panel Type:	LCD IPS-Panel
Screen Diagonal:	55 inch (ca. 139 cm)
Active Display Area:	1209.6 × 680.4 mm
Installation:	Landscape or Portrait Installation possible
Display Mode:	Transmissive mode, normally black
Display Resolution:	1,920 × 1,080 Pixel (full HD)
Colours:	1.07G (10-Bit Colour Processing)
Brightness:	700 cd/m <sup>2</sup> (typ.)
Contrast:	1200 : 1 (typ.)
Viewing Angle:	178° H/V
Response Time:	12 ms
Backlight:	Direct LED
Backlight Life-Time:	> 60,000 hrs (Luminance <50%)
System MTBF:	> 60,000 hrs
24/7 Operation <sup>1</sup> :	Yes (recommended operation: 20/7)

#### CONNECTORS & CONTROL

Inputs <sup>2</sup> :	Video, Y/C, DVI-I (digital/analog), HDMI, DisplayPort, RS232
Outputs <sup>2</sup> :	DisplayPort
Internal Matrix:	Yes, 10 × 10

#### MECHANICAL

Display:	1213.4 × 684.2 × 105.5 mm (W × H × D)
Bezel Width:	Bezel-to-Bezel: 1.25 mm bottom/right, 2.25 mm top/left
Weight:	34 kgs
VESA Mount:	400 × 600

#### OPERATING CONDITIONS

Power Consumption:	ca. 210 Watt (max.)
Input Voltage:	100V – 240V AC, 50/60 Hz
Operating Temperature:	typ. 0 - 40 °C
Humidity:	typ. 10-80 % RH (no condensation)

#### OTHER

Handling:	Handles for simple and safe transport and installation
Cooling:	Low-noise fans

#### OPTIONS

eyevis Processing Unit (-EPU):	This embedded PC solution provides additional functionalities for the displays regarding signal connectivity and control, and allows their simple integration in eyevis' fully network-based MetaWall concept.
Front-Service Option:	Full front-service Landscape/Portrait video wall mount
Colour Adjustment:	EYE-LCD-CAS colour adjustment system
Touch:	Infrared touch overlay for video walls

#### ORDERING INFORMATION

Item Number:	21651
--------------	-------

### ) THE ADVANTAGES AT A GLANCE

- 55" screen diagonal (ca. 139 cm)
- 700 cd/m<sup>2</sup> brightness for bright images and best readability
- Full HD resolution (1,920 × 1,080 Pixel)
- Bezel-to-Bezel: 3.5 mm
- Direct LED backlight for uniform illumination and brilliant colours
- Optimised power consumption
- Internal matrix function for signals and control
- Robust metal design for demanding applications

### ) APPLICATIONS

- Control Rooms (e.g. for Video Surveillance)
- Board Rooms
- Show Rooms
- Conference Rooms
- POS/POI
- Trade Fairs / Events
- Trading Rooms

### ) FRONT-SERVICE OPTION



EYE-WHLCD-FS-QR-65-LAND  
(for Landscape Installation)



EYE-WHLCD-FS-QR-65-POR  
(for Portrait Installation)

<sup>1</sup> When observing required terms and condition of operation

<sup>2</sup> Possible for signals up to 4K if supported by the signal source/graphic card on output side