



squareTILES - EYE-LCD-2160

SQUARE 21.6-INCH LCD MODULES FOR ARCHITECTURAL DIGITAL SIGNAGE INSTALLATIONS



) DISPLAY PROPERTIES

- 21.6-inch square LCD screen
- Ultra super narrow bezel design for seamless tiled applications
- Direct-LED illumination for best image uniformity
- High resolution and perfect viewing angles
- Robust but light-weight aluminium metal housing
- Daisy Chain for signal (DVI) and control (RS232)
- Silent ventilation system
- Different installation possibilities
- Modular wall mount bracket for easy installation
- Ideal for creative digital signage applications

) TECHNICAL SPECIFICATIONS

FEATURES

Bezel:	5.9 mm Active to Active
Aspect Ratio:	1:1
Backlight:	208 Direct-LEDs
Connectivity:	DVI in/out, RS232 in/out

GENERAL

Resolution:	960 x 960 Pixel
Pixel Pitch:	0.403(H) x 0.403(V) mm
Active Screen:	387.36 x 387.36 mm
Colours:	16.7M colours

OPTICAL CHARACTERISTICS

Brightness:	450 cd/m ² (typ.)
Contrast:	4000:1 (typ.)
Viewing Angle:	178° H/V (typ.)
Response Time:	8 ms (G-G)
Gamma:	2.2
Colour Temperature:	10000 K
Colour Gamut:	72 %

ENVIRONMENTAL

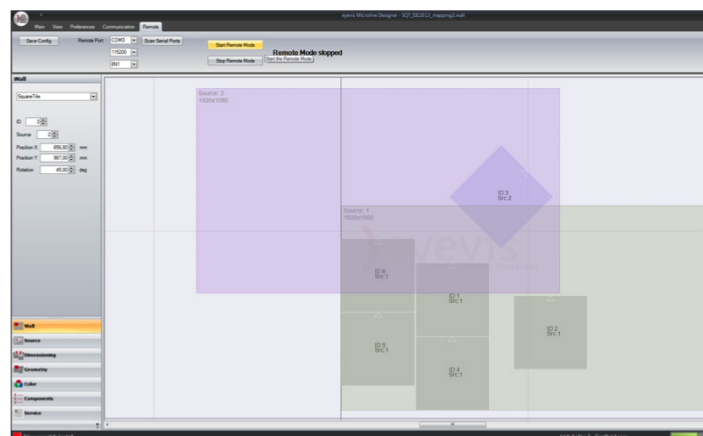
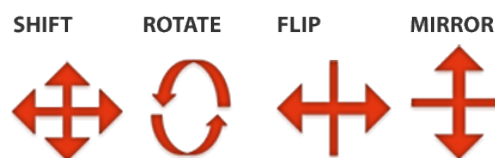
Power Consumption:	typ. 60 W, Standby ≤1W, (internal power supply)
Input Voltage:	100V – 240V AC, 50/60 Hz
Operating Temperature::	typ. 0 - 40 °C
Humidity:	typ. 20-80 % RH (no condensation)

MECHANICAL SIZE

Dimensions:	393.26(W) x 393.26(H) x 100(D) mm
Weight:	7.5 kgs

) ANY CONFIGURATION POSSIBLE

- Internal high quality image processing
- Integrated scaler & matrix for easy image alignment
- Image manipulation for any mounting position (Shift / Flip / Rotate / Mirror)
- Setup and adjustment with an intuitive software GUI
- Easy source assignment
- Flexible image manipulation of each single squareTILE



) PRODUKTBILDER



Front View



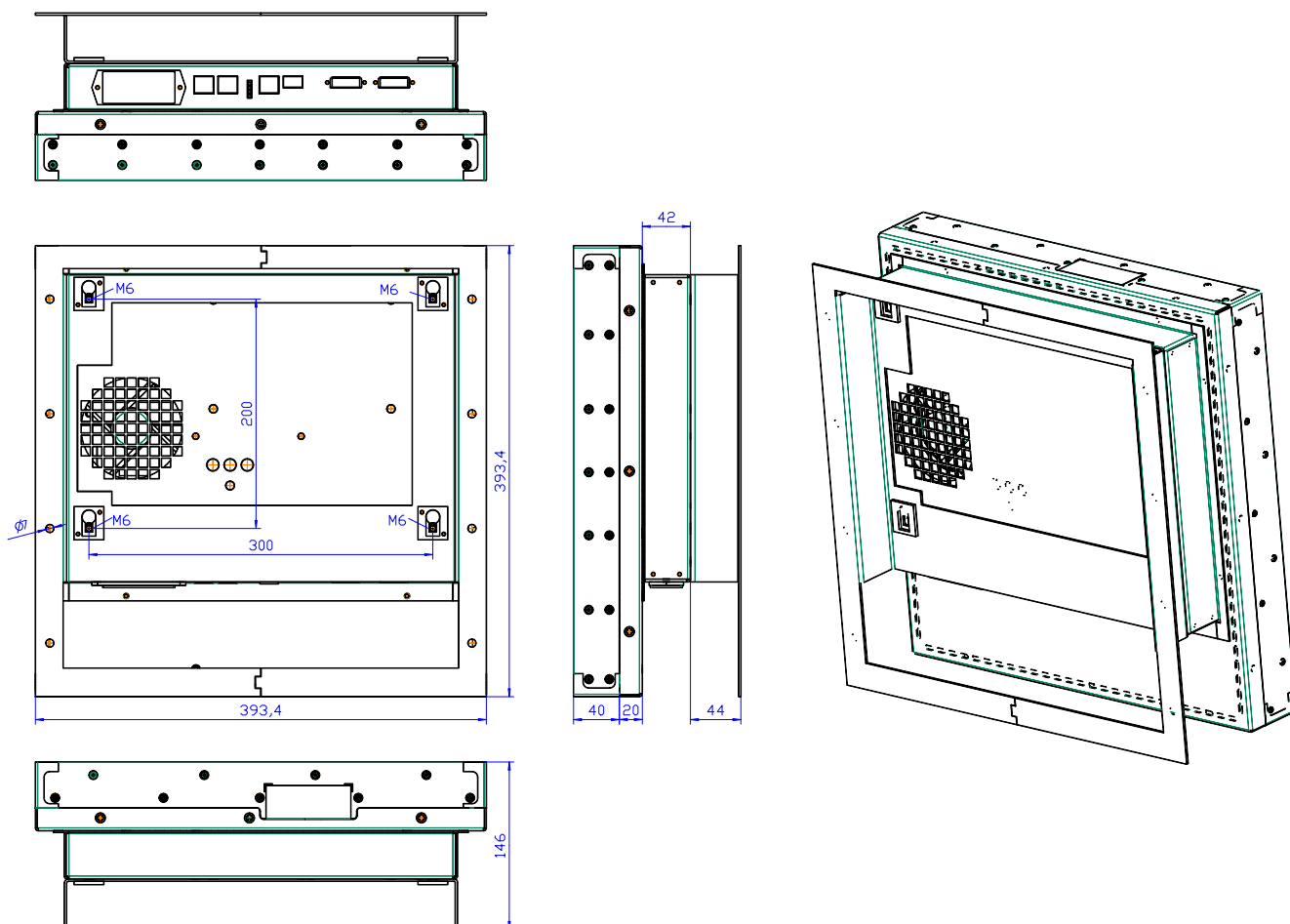
Back View



Side View



) DRAWING



) APPLICATION POSSIBILITIES



eyevis GmbH

Hundsschleestr. 23 • 72766 Reutlingen • Germany
 Phone: + 49 (0) 7121 43303 - 0 • Fax: + 49 (0) 7121 43303 - 22
 www.eyevis.de • info@eyevis.de

As at: 07.08.2013/V1.2 • Subject to change!

All trademarks and registered trademarks are the property of their respective owners. Copyright © 2013 eyevis GmbH. All rights reserved.