

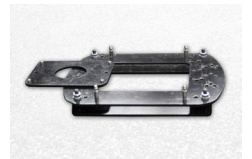
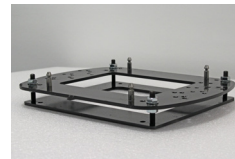
Basement Components for eyevis omnishapes

eyevis Accessories

) LIST OF AVAILABLE VERSIONS & COMPONENTS

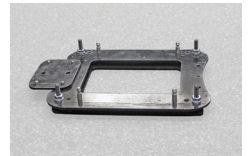
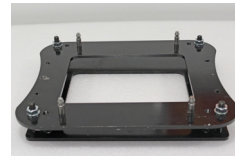
1. OSH-UG-Standard (Art. Nr. 17016)

Standard basement for omnishapes
 4:3 (rectangular) and pentagonal shapes (transfer shapes)
 Levelling feet with 4x set screws M10x60 mm mounting plate 6 mm,
 incl. 4x location bolts 10 mm zinc-plated and connection element



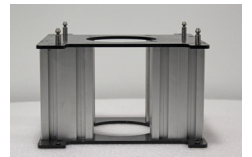
2. OSH-UG-Hexagonal (Art. Nr. 17017)

Basement for hexagonal omnishapes
 Levelling feet with 4x set screws M10x60 mm mounting plate 6 mm,
 incl. 4x location bolts 10 mm zinc-plated and connection element



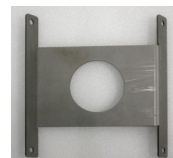
3. OSH-ZG-180 ((Art. Nr. 17018)

Intermediate basement for hexagonal omnishapes or elevation
 Intermediate basement 180 mm
 300 x 400 mm, zinc-plated



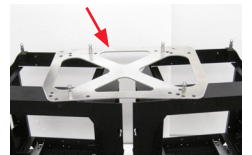
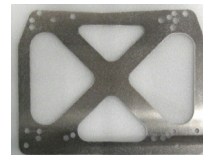
4. OSH-Combiner-hexagonal ((Art. Nr. 17019)

Connection element for omnishapes
 Hexagon-to-Hexagon or Hexagon-to-Pentagon
 3 mm steel, 2x emarginated, zinc-plated



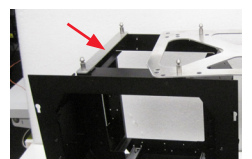
5. OSH-FP (Art. Nr. 17020)

Format plate for omnishape connection
 3 mm thick, size 300 x 400 mm
 Uncoated aluminium
 This item is included in the shipment of an omnishape, but can also be ordered separately.



6. OSH-FR (Art. Nr. 17021)

Format bar for omnishapes to level the used OSH-FP
 3 mm thick
 Uncoated aluminium
 This item is included in the shipment of an omnishape, but can also be ordered separately.



eyevis GmbH

Hundsschleestr. 23 • 72766 Reutlingen • Germany
 Phone: + 49 (0) 7121 43303 - 0 • Fax: + 49 (0) 7121 43303 - 22
 www.eyevis.de • info@eyevis.de

As at: 20.01.2012/V1.0 • Subject to change!

All trademarks and registered trademarks are the property of their respective owners. Copyright © 2012 eyevis GmbH. All rights reserved.