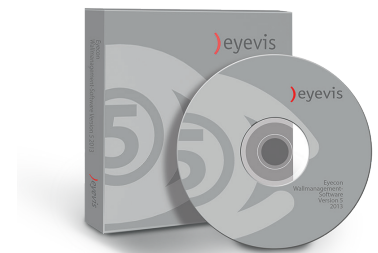




# eyeCON V5.1

WALL MANAGEMENT SOFTWARE



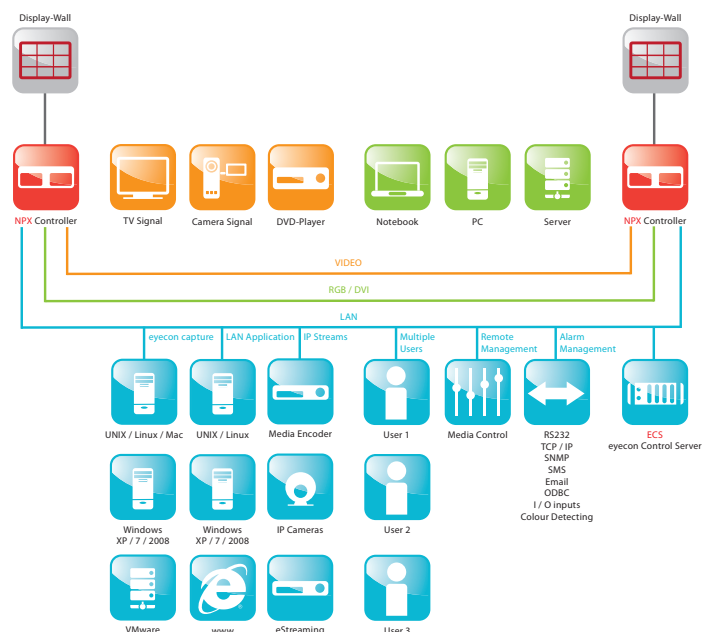
## GENERAL DESCRIPTION

eyeCON is a comprehensive software solution for the operation of large screen systems. eyeCON provides control over all connected signal sources and enables distribution, collaboration and exchange of information in control rooms and presentation areas. The system is based on an intuitive user interface which reduces reaction times and makes the operation of video wall systems more efficient.

After continuous development of the software for more than ten years, the fifth generation of eyeCON comes with a modern graphical user interface and numerous new features. Furthermore, eyeCON V5.1 provides even better performance and simplified control for enhanced collaboration in control rooms.

### Network-based System

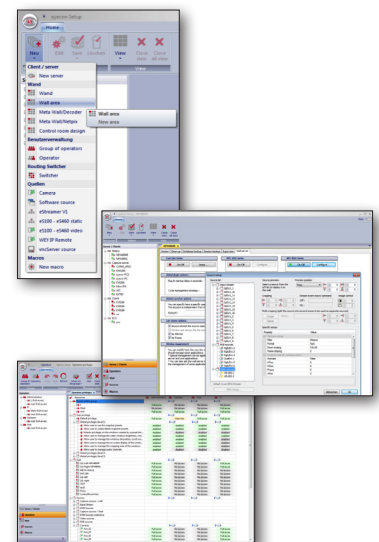
eyeCON 5 is completely based on client/server-technology. All information is globally available within the network and can be shared and exchanged between various monitors, video walls and workstations. Information and sources can be made available even outside local sites. The new version 5.1 is fully compliant with eyevis' streaming concept using eStreamer devices to make any type of sources (analog, RGB, DVI, HDSDI etc.) available in the network. The software-based capturing of signal sources (eyeCapture) has also been revised and now provides an ultra-fast transmission of desktop contents.



## EYECON SETUP & DATA BASE

eyeCON V5.1 received a complete face-lift of the graphic user interface that results in a more comfortable operation and configuration. The configuration is now performed within a single software (eyeSetup), regardless your location inside the network and can hence be realised from any workstation which makes the configuration as simple as never before.

- Client Server architecture with central data base (MySQL)
- All Client-information are stored in a dedicated
- Simple, intuitive, central configuration in a single software
- Quick configuration with the setup wizard
- Simple backup (automatic/time-scheduled)
- Control mechanisms and event reporting via email, SMS, TCP/IP, SNMP
- Unique modular platform allows simple upgrading of additional modules and features
- Comprehensive product maintenance and installation on all clients over the network
- Automatic detection of network sources and clients
- Unlimited number of users can work with the eyeCON software on the local workstations
- Easy administration of individual users and user-groups
- Freely definable access rights, user classes and video wall areas for every user
- Active Directory support





## eyeCON V5.1 WALL MANAGEMENT SOFTWARE

### ) EYECON CLIENT

The functions of the software are controlled with the new GUI „eyeControl“. Thanks to the network-based architecture of the software every connected signal source can be displayed on video walls, individual monitors, or any workstation PC.

- Drag & Drop interface with tabs
- Ease of use and short training period
- Control over all connected sources and client systems on the network
- Multiwall / MultiView / MultiTab: efficient operation with several large screen walls
- Simple tools like snap-to-grid, snap-to-wall, snap-to-window
- Live preview of all the signals in the network and physical sources
- Layout manager for an even simpler layout and operation of display walls
- Scheduler to control the timing of all presets and macros
- Cycling function for automatic temporal rotation of presets or sources
- Remote control the display walls with the local keyboard and mouse of the users' workstations for precise control of all windows
- Keyboard and mouse control from any connected display controller or client (Soft-IP-KVM)

#### ControlRoomView

The ControlRoomView provides the possibility to generate individual views of rooms, buildings or sites in a clear, realistic illustration. Each individual monitor or large-screen display system can be placed visually and be actively worked with all sources and layouts. Through this simplified view the user gets of an even clearer overview of the entire system.

#### WallPreview

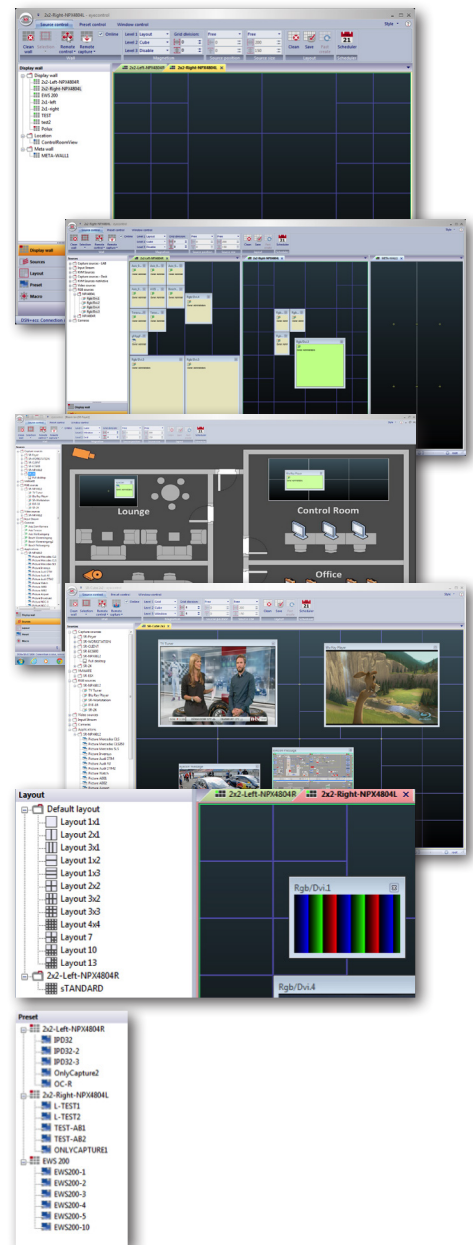
With the WallPreview function the entire contents of a display or a large screen can be followed live. The technique transmits the entire wall content live in a mini wall view. Optionally, the live-preview can also be in the user interface of the eyeCON software.

#### LayoutManager

With the LayoutManager tool displays or areas of video walls can be divided in predefined layouts. This can be very useful for the display of many simultaneous signals in a specified area and simplifies operation. The user gets a more ergonomic selection and exchange of resources and can work even faster and more accurately.

#### Global Presets

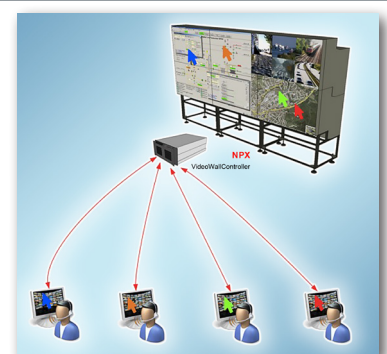
- Exchange of presets between users
- Each user can launch his presets onto any other workstation, individual displays or any large screen display
- Create presets with several commands such as „Replace“, „Hide“, „Add“ and „Advanced Clean“
- Preview of all presets, simple definition and launching
- Offline mode for simple configuration and creation of presets



### ) MULTIMOUSE / REMOTE CONTROL

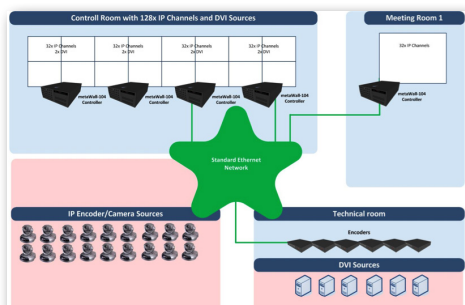
With the eyeMultiMouse functionality any user within the network can operate the large screen with its own mouse and keyboard. It is possible to define video wall areas and user rights individually for each user. All users can easily jump on the large screen with their mouse cursor by leaving their local desktop with the mouse to the top or to the side.

- Free definable sizes for the mouse cursors
- Definition of individual colours of the mouse cursors for each user
- Additional information on the user of the mouse can be displayed with the cursor
- Simultaneous operation of all mouse cursors
- Simultaneous mouse activity and text input in separate windows
- Definable areas of action for users
- Individual rights and group management for each user



## eyeCON V5.1 WALL MANAGEMENT SOFTWARE

### WALLSERVER



#### WallServer

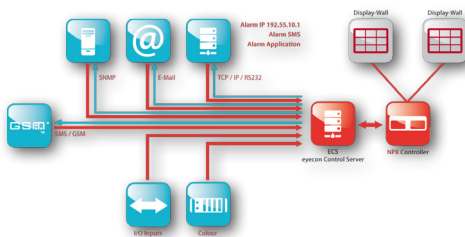
- Viewer engine to display all sources and the dynamic management and control
- Free positioning and scaling of all sources
- Cropping and zooming for all capture sources, as well as video, RGB / DVI and IP streaming
- Multiple cropping for individual sources
- Scaling and cutting the screen contents with MultiCropping technology
- Compatible with eyevis NPX4800 series, EWS series and any Windows workstation PC

#### MetaWall

With the new MetaWall feature small to medium sized display walls can be combined to a single large system. In the GUI the user gets a view of a single a large screen system layout, no matter how extensive the real system is. Thus, unlimited video walls can be realised with hundreds of simultaneously displayed sources.

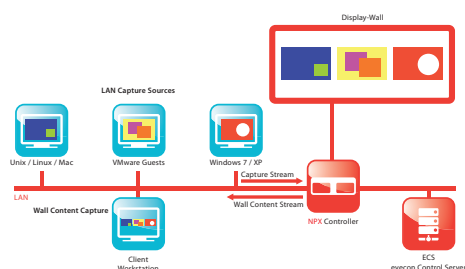
- Interconnection of various display controllers to a single large display wall
  - For unlimited number of display walls, or for support of almost infinite number of inputs
  - The operator sees a single large screen system in GUI regardless the complexity of the real system
  - Sources can be freely positioned and scaled
- Compatible with eyevis' NPX4800 series  
Sources can be moved along the entire video wall

### ALARM-MANAGEMENT SYSTEM



- Creating macros for complex pre-defined workflows
- Colour/Motion detection for capture sources
- Audio-visual presentation of alarms and events
- Easy integration with TCP / IP, ODBC, RS232 and all common network protocols
- Inputs for digital I/O and analog I/O signals from external electrical contacts or systems

### CAPTURE FUNCTIONS



#### Software Capture

The eyeCON capture system has been developed to visualize the screen contents of all connected workstations on the large screen. Its intelligent performance enables the common administration and display of an unlimited number of clients over the LAN - and this at the same time, using a keyboard and mouse. The transmission in eyeCON V5.1 happens very fast and can be used for all operating systems.

- KVM mode - controlling the mouse and keyboard of the PC workstation
- Multi-screen support
- Support for Windows XP, Windows7, Windows8, Windows Server 2008 64bit/32bit, Linux distributions, Unix, Apple Mac OS

#### Hardware Capture

With our special eStreamer boxes it is also possible to connect computers without installing software on them. Thus a completely secure connection can be guaranteed.

- Support for eStreamer eS100 and eStreamer-RGB

#### Virtual Capture

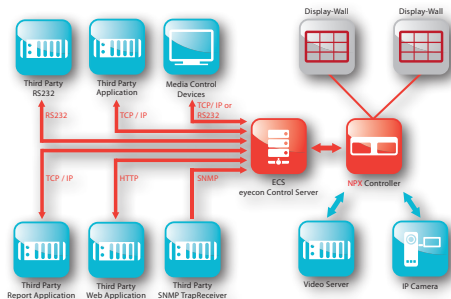
Also direct connections to virtual machines are supported by default with the Capture Technology. No software is needed on the systems because the eyeCON system directly accesses the virtual server. This provides an easy integration with no software installation and provides optimal protection if no software is allowed on the client system, or a secure connection is required.

- Support for VMware Server (vSphere)



## eyeCON V5.1 WALL MANAGEMENT SOFTWARE

### INTEGRATION



#### eyeSupervisor - External Control

- Complete API support with TCP/IP, RS232, ODBC connectors, HTML/PHP
- Simple and fast integration of third-party applications
- Compatible with media controllers, e.g. Crestron, AMX, etc.

#### Mobile Devices & Touch Support

- Integrated server for a simple connection to smartphones, Tablet-PCs, or touch panels
- Control & launching of presets and macros
- Compatible with Apple iOS, Android, Microsoft and any HTML browser

#### Supported Sources & Systems

- Analog VGA signals, digital DVI/HDMI/DP signals, video signals (Composite & HD/SDI)
- Streaming sources from encoders and cameras (MPEG2, MPEG4, JPEG2000, H.264)
- eStreaming sources from eyevis encoders (H.264, eJPEG, RFB)
- Capture sources, VNC sources and virtual machines
- Windows applications, Linux/Unix applications
- Web-based contents (HTML, JAVA etc. )
- Standard Windows Systems, controller from eyevis' NPX4800 Series & EWS controllers

### CLIENT / CAPTURE HARDWARE REQUIREMENTS:



#### CAPTURE CLIENT

Operating System: Windows XP® (x86, x64), 2003 Server® (x86, x64), 2008 Server® (x86, x64), Windows 7 (x86, x64), LINUX, UNIX, MAC OS

#### WORKSTATION & CLIENT

Operating System: Windows 2008 Server® (x86, x64), Windows 7 (x86, x64)

Processor: minimum Intel® Core 2 Duo 2GHz with 1GB RAM

Network: 100/1000Mbit

#### SERVER HARDWARE REQUIREMENTS:

Operating System: Windows 7, 2008 Server® (32Bit/64Bit)

Processor: Intel® XEON® 2GHz CPU

Network: 1000Mbit

### EYECON VERSIONS AT A GLANCE

#### eyeCON V5 LITE MODULE

1 User Licence

max. 1 Wall Server (Netpix)

MetaWalls-Decoder (eStreamer Video Stand-alone)

#### eyeCON V5 BASIC MODULE

5 User Licences (for simultaneous use)

max. 1 Wall Server (Netpix)

#### eyeCON V5 BASIC OPTIONAL MODULES

eyeCON V5 Unlimited Users

eyeCON V5 MultiWalls

eyeCON V5 MetaWalls

eyeCON V5 Capture

eyeCON V5 SuperVisor

eyeCON V5 MultiCropping

eyeCON V5 MultiMouse

eyeCON V5 CaptureRecorder

eyeCON V5 eyeCON X-Server

#### eyeCON V5 PREMIUM MODULES

Unlimited User Licences

Unlimited Wall Servers (Netpix)

eyeCON V5 MultiWalls

eyeCON V5 MetaWalls

eyeCON V5 Capture

eyeCON V5 SuperVisor

eyeCON V5 MultiCropping

#### eyeCON V5 PREMIUM OPTIONAL MODULES

eyeCON V5 MultiMouse

eyeCON V5 CaptureRecorder

eyeCON V5 eyeCON X-Server



eyevis GmbH

Hundschleestrasse 23 • 72766 Reutlingen • Germany  
Phone: + 49 (0) 7121 43303 - 0 • Fax: + 49 (0) 7121 43303 - 22  
www.eyevis.de • info@eyevis.de

As at: 14.10.2013/V1.0 • Subject to change!

All trademarks and registered trademarks are the property of their respective owners. Copyright © 2013 eyevis GmbH. All rights reserved.