



**SOLUTIONS FOR  
PRESENTATION & INFORMATION  
PERFECT VISUAL SOLUTIONS**



## PERFECT SOLUTIONS FOR GREAT PERFORMANCES BREATHTAKING IMAGES “MADE IN GERMANY”.



The key to position your brand message successfully and hence to get the intended information across during a presentation stands and falls with the quality of the reproducing medium. This is especially true for information delivered through digital images and videos. eyevis is a leading manufacturer of digital display solutions and video wall systems for professional visualisation. With high-quality LCD screens, interactive touch-screens, transparent LCDs, high definition LED modules and our omniSHAPES, especially developed for creative video wall configurations, eyevis sets standards in the fields of visual display technologies.

Whether in the entrance area of a corporate building, as part of a store-concept, as digital information board in a museum, as advertising board in a sports arena or even built in a digital display floor – the field of application for our products is highly versatile. A wide range of optional features, accessories and customizable solutions allows their use in virtually any application. eyevis views itself as a partner and source of inspiration to its customers. Through discussion we develop solutions which are technically and economically persuasive.

It is our ambition to offer our customers products that fulfil the demands on latest state-of-the-art technology of the highest

quality for visual display systems and signal processing which is guaranteed thanks to our proprietary development and production.

Continuous investments in research and development as well as many years of experience steadily lead to new ideas and improvements which become part of our products and hence increase their performance and quality again. Combined with the use of latest technologies this puts us in the position to provide solutions that perfectly suit the application at hand.

Our international network of subsidiaries, dealers and service partners helps us to combine the qualifications and motivation of all employees in order to perfectly conform with the requirements of our customers all over the world. Our expertise is passionately encapsulated into every single eyevis video wall system – from consultancy to development through to production and service.

WE'RE AT HOME HERE.

SOLUTIONS FOR  
CORPORATE COMMUNICATIONS



SOLUTIONS FOR  
ADVERTISING/POS/POI



SOLUTIONS FOR  
DIGITAL SIGNAGE



SOLUTIONS FOR  
SPORTS VENUES AND ARENAS



SOLUTIONS FOR  
EVENTS



# OPERATING WORLDWIDE MISSION CUSTOMERS WHO PUT THEIR TRUST IN EYEVIS TECHNOLOGY.



## ADAC HEADQUARTERS MUNICH

In the new building called the "Star of Sendling", seven former locations of the "Allgemeiner Deutscher Automobil-Club e. V. (ADAC)" with around 2,400 employees were combined. In order to allow for an efficient operation according to a so-called Flex-Office-Principle, the ADAC intensively invested in the equipment with media technology. Also installed were video walls made of 60" eyevis EYE-LCD-6000-SN.

Sufficient meeting spaces for the teams are provided by four assembly halls, 36 conference rooms and 40 spaces for meetings on the go which are spread out all over the building.

60" LCD displays type EYE-LCD-6000-SN with 152 cm screen diagonal by eyevis have been used at important points. In the large 350 seat lecture and event room for example, a 6x3 video wall can be found. Inside the two large assembly halls on the 21st and 22nd floor of the central tower, a 2x2 and a 3x3 video wall were installed. In addition, a 2x2 and a 3x3 video wall were put into operation on two of the training rooms on the ground floor.

### Equipment used:

- 44x EYE-LCD-6000-SN (60" video wall LCD with Direct-LED Backlight)



## VODAFONE VILLAGE MILAN

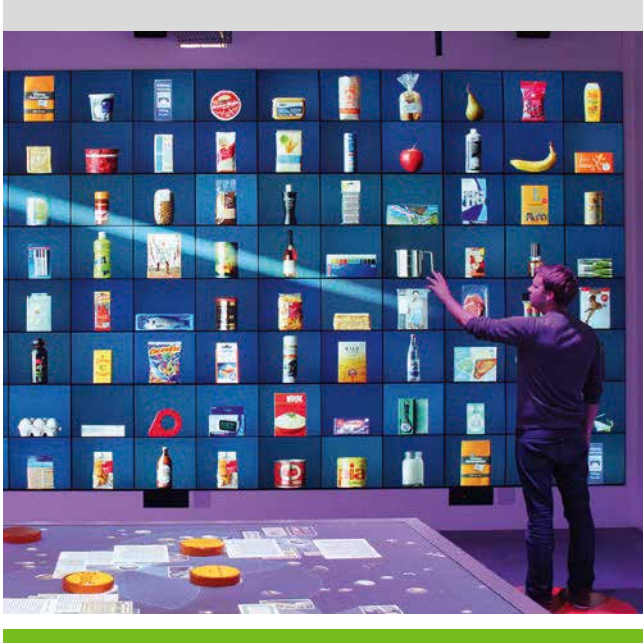
Vodafone Village is an innovative eco-technological office complex with an area of 67,000m<sup>2</sup>, which hosts Vodafone's new main office in Milan. 3,000 employees from different offices from the region from Milan to Corsica now work together in the new facilities.

In addition to environmental aspects, Vodafone Village is also a trend-setting example for the application of innovative AV technologies. Vodafone decided to entrust eyevis Italy with the task of equipping Vodafone Village with the most modern display technology for the most demanding and security relevant areas of the whole facility. Eyevis visualisation and large-scale video systems were placed in the main entrance hall, the network control centre, the security centres and the training centre.

Fifty units of eyevis super-narrow-bezel LCDs were used to install different video walls in the foyer and conference rooms. eyevis rear-projection cubes, split controllers and wall management software show their strengths in the control rooms for security and network operation.

### Equipment used:

- 50x EYE-LCD-4600-SN-V2 (46" video wall LCD)
- 12x EC-70-LWXT (LED-lit 70" XGA DLP® Rear-Projection Cube)
- 6x EYE-LCD-5500-LHD (55" LCD with Edge-LED Backlight)
- 4x netPIX-4800R (redundant High-End Graphics Controller)
- 2x eyeCON-V4-Premium (Wall Management Software)



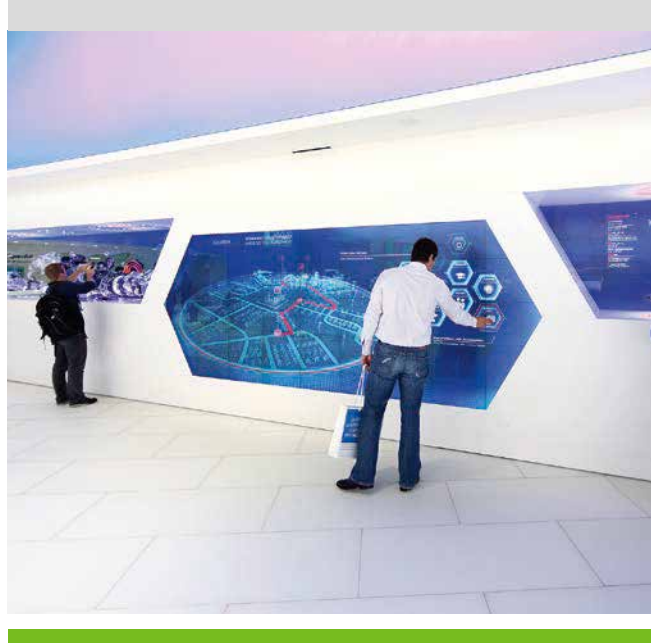
## MIGROS ORANGE GARDEN IN RÜSCHLIKON, SWITZERLAND

Playful, interactive, flexible and always extendible with current contents – in that way the Orange Garden in Rüschlikon tells the history of Migros. A history representing the history of consumerism and everyday life in Switzerland – made tangible in a completely different way by eyevis' modern and interactive technology.

In the heart of the garden, in the pavilion, visitors can request exactly what they are interested in only with body movement and without any contact on a wall sized video wall that consist of 20x 60" DLP rear-projection cubes from eyevis. The application of the LCD screens is interesting as well. Several monitors are used to offer a virtual look out of the pavilion window. Here, signals of cameras which film the outside are displayed. Further monitors with touch option are used as interactive visitor information.

### Equipment used:

- 20x EC-60-LHD (LED-lit 60" Full HD DLP® Rear-Projection Cubes)
- 3x EYE-LCD-5200W (52" Full HD LCD)
- 4x EYE-LCD-4600-NB (46" Full HD LCD)
- 3x EYE-LCD-4200-NB (42" Full HD LCD)
- 7x EYE-LCD-4200-TOUCH (42" Full HD LCD with Touch System)
- 3x EYE-LCD-4600-LHD-TOUCH (46" Full HD LCD with Edge-LED Backlight and Multi-User Touch System)



## VOLKSWAGEN SHOW CONCEPT FOR INTERNATIONAL MOTOR SHOWS

Since their world premiere at Frankfurt Motor Show 2011 eyevis omniSHAPES, our flexible all-rounders, are an inherent part of Volkswagen's international show concept. Because of their unique ability to realize high-resolution convex and concave curved screen setups, one of the largest automobile manufacturers worldwide decided for our product. In front of the curved video wall installation real exhibits are presented matching the image content on the screens. In addition, a touch system provided interactive usability of the information presented.

The company CT Germany, responsible for the implementation of media technology, added several hundred omniSHAPES to its rental inventory especially for this popular customer. After their first successful appearance in Frankfurt numerous similar installations have been realised on leading motor shows in the world, for example in Shanghai, Geneva and Detroit. Also in 2013 omniSHAPES and VW returned to IAA in Frankfurt, the place of their first official appearance.

### Equipment used:

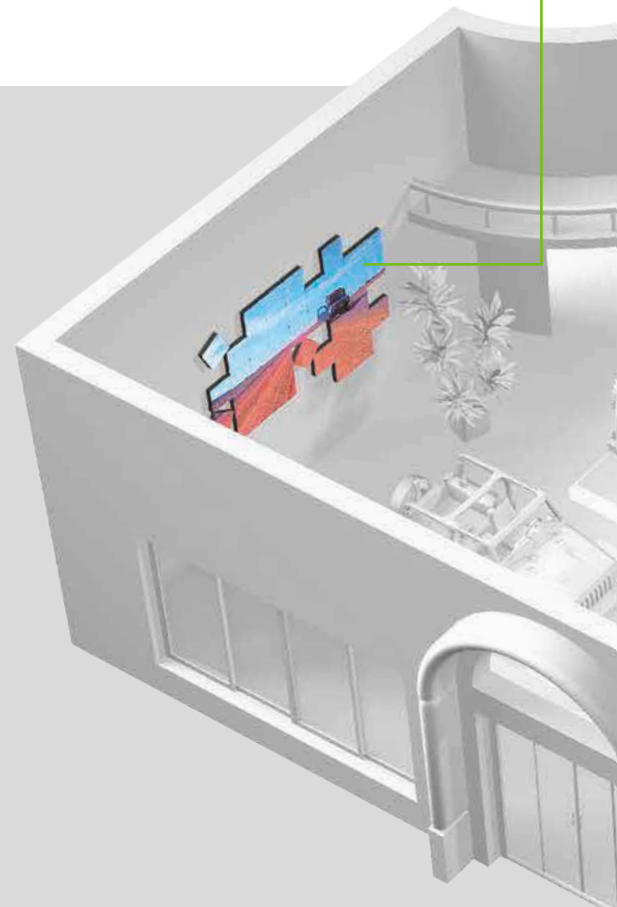
- 250x omniSHAPES (flexible LED-lit DLP® Rear-Projection Units)

# NO COMPROMISE IN INFOTAINMENT AND PRESENTATION JUST IMPRESSIVE PERFORMANCE.

## EYE-CATCHING VISUAL DISPLAY SOLUTIONS - POWERFUL PICTURES AND UNIQUE FLEXIBILITY

Visual communication plays a very important role in the fields of presentation and information. The way a company attracts its customers makes a significant contribution to its success. Visualisations at the POS or in the context of events have to engage and fascinate the viewer. Especially for such applications eyevis provides a range of innovative products and system solutions that offer an absolutely brilliant picture quality and high reliability - even in difficult light conditions. Flexible and creative to use they offer everything you would expect to catch the viewer's interest takes to arouse interest and to tie attention.

Whether single LCD monitors or LCD video walls, omniSHAPES and high-resolution LED modules for creative installations, or the freaky transparent LCD screens - we deliver exactly the solution that best fits our customer's current request in the areas of presentation and information.



### OUR PRODUCTS IN USE

) **omniSHAPES** EYEVIS MICROLINE    ) **eyeLED** EYEVIS SMD LINE

) **transparentLCD** EYEVIS LCD LINE    ) **eyeLCD** EYEVIS LCD LINE

) **eSTREAMER** DVI OVER IP NETWORKS

Creative Video Wall Configuration with high-resolution LED modules

Multi-touch information display from the eyeLCD series

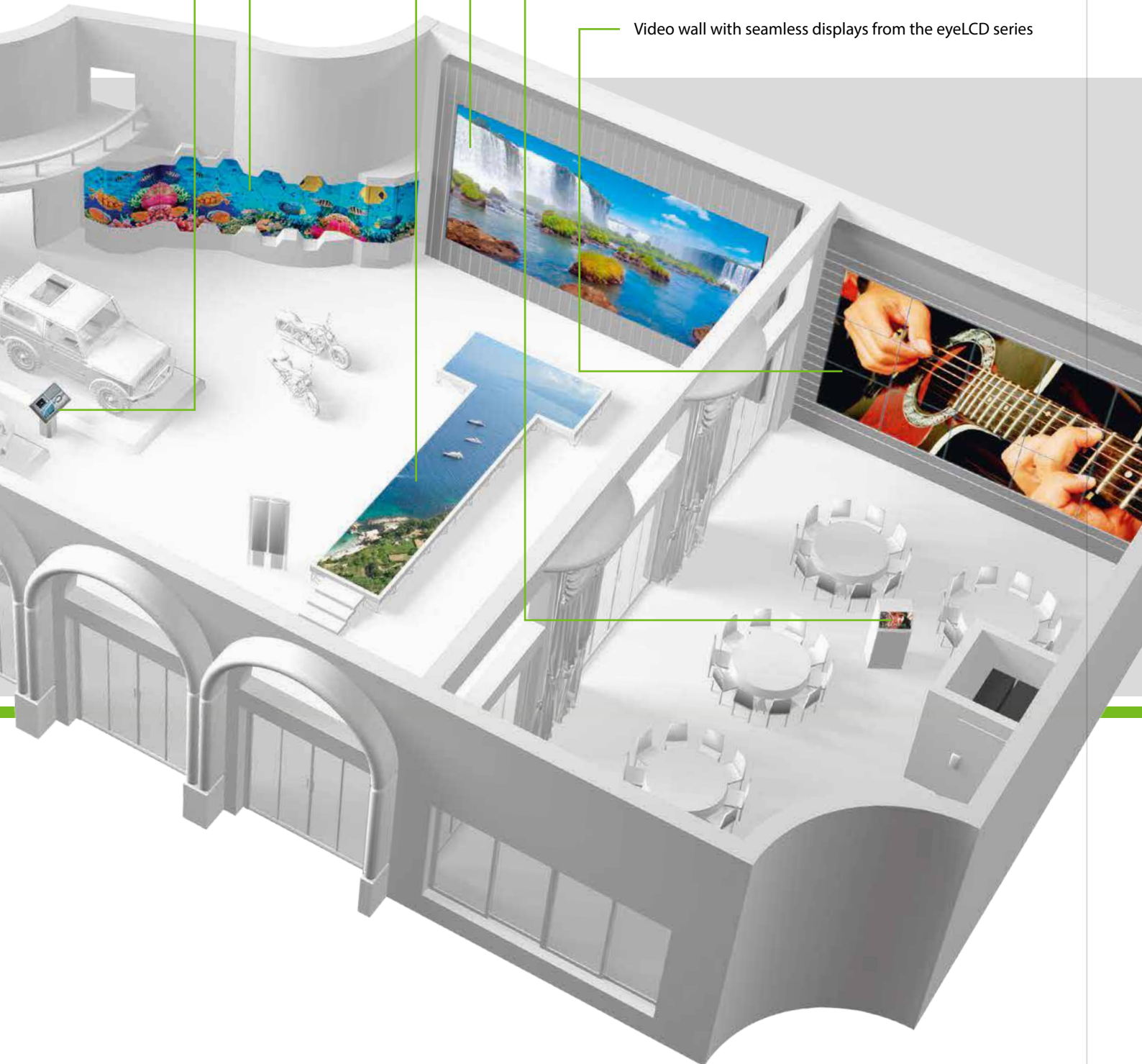
Convex-Concave curved video wall configuration with rectangular, pentagonal and hexagonal omniSHAPES

Walkable display surface with omniSHAPES

Video wall with high-resolution LED modules from the eyeLED series

Digital POS stand with transparent display from the eyeLCD series

Video wall with seamless displays from the eyeLCD series



# ALL INSTRUMENTS IN PERFECT HARMONY

## SYSTEM COMPONENTS FOR PRESENTATION & INFORMATION



### omniSHAPES – OUR FLEXIBLE ALL-ROUNDERS

Ingeniously simple, simply ingenious – that's the principle of our flexible to use rear-projection display units which can be used to create video walls of versatile configurations and shapes. In addition to the diverse available screen shapes there is also the possibility to define customised shapes and special mechanic components for the installation. omniSHAPES can even be assembled in curved arrangements, both convex and concave. Also digital display floors have already been realised with our multi-functional display units.

Digital images of the highest quality and reliability can be guaranteed through the use of DLP® technology with an LED light source for the projector. The flexible and user-friendly building block design of the omniSHAPES comprising a robust base frame unit, the projector, and the screen, allow for their simple installation and trouble-free maintenance.

Regardless the configuration, the connections for signal and control can simply be daisy-chained from one module to the other. The internal image processing ensures that every omniSHAPE in the chain shows the correct part of the overall image signal according to its position in the configuration. The adjustment and assignment of the signal sources as well as the settings for various additional parameters can easily be achieved through the intuitive eyeDesign software.

The latest generation of our omniSHAPES is optionally available with 120 Hz technology which enables the display of three-dimensional images in combination with active shutter glasses.

### eyeLED – SEAMLESS, SHARP AND BRIGHT

With our new LED modules from the eyeLED series, eyevis presents LED display technology with an image definition never seen before. Thanks to a minimal pixel pitch the viewer gets a stunningly sharp impression of the displayed image even from shorter viewing distances. The awesome brightness level and the uniform display surface further enhance this brilliant visual perception without visible gaps between the individual modules. The new LED modules with a pixel pitch of only 2mm and below are a first choice for video walls in TV studios, presentation areas, at events or live-shows. Here, the new LED technology creates an additional high-quality element for eye-catching image display.

Besides the super-fine pixel shift, the decisive benefit of eyevis new LED technology is the sophisticated design of the products from the eyeLED series. This includes the robust mechanic construction an integrated image processing for the LED modules. Based on our many years of experience with video wall technology and signal processing, we have developed special controller boards which enable a simple control also for our LED modules. As a further development of the technology implemented in our omniSHAPES, the input boards for the LED modules provide simple daisy-chaining for signal and control, image source mapping for each module and manageability over the eyeDesign software.





## THE LCD MONITORS FROM THE eyeLCD SERIES

With the eyeLCD series eyevis provides a comprehensive product range of professional LCD monitors for any application in areas for presentation and information. Single monitors with Full-HD resolution and screen diagonals from 46- to 90-inch belong to the range as well as different display types with Ultra-HD/4K resolution with screen diagonals up to 84-inch.

For LCD-based video walls we offer different types of seamless LCD monitors. Thanks to the thin bezel of the devices the visible mechanical gap between the individual screens in a video wall could be reduced to only a few millimetres. The robust design and the internal matrix-split functionality ease their assembly in a video wall in rental applications but also for fixed installations.

For especially demanding applications the eyeLCD series also offers devices which under warranty can be operated in 24/7 mode without image retention effects caused by static image contents. There are also displays available for the installation in challenging environments, for example in protected outdoor areas. To ensure best readability even in difficult light conditions, the range is completed by LCD monitors with high-brightness panels. Thanks to their extraordinary bright display best image quality is guaranteed even at exposure to direct sunlight.

The devices from the eyeLCD series can be upgraded with various optional features and accessories. All monitors can be ordered with a customised finishing for the housing. For the interactive display of information a high-quality touch solution with up to 32 simultaneous touch events is available for all LCD models or even video walls with screen diagonals up to 200 inches. For numerous display types there is the possibility to integrate the optional eyevis-Processing-Unit (EPU). This embedded PC solution provides additional functionalities for the displays regarding signal connectivity and control, and allows their simple integration in eyevis' fully network-based MetaWall concept.

As a provider of complete solutions, eyevis of course also offers diverse solutions for the integration and installation of all of our products. To complement our comprehensive offer, a broad range of accessory devices, such as signal splitters, transmission systems, or split controllers, as well as various mounting solutions for individual monitors or video walls.



## TRANSPARENT LCDS FROM OUR eyeLCD SERIES

Full transparency – that's the outstanding feature of these translucent digital screens which allows their use for the presentation of product information or advertising content directly in front of a real exhibit. The revolutionary thing about this unprecedented display type is its transparency. It makes it an ideal infotainment medium for the use in shop windows, at the point-of-sale, in showcases, trade show booths and many other areas where an exciting attraction of the viewer is crucial.

These monitors can be used to represent information, pictures, presentations, movies, and graphics in a unique fashion combined with a real object in the background. The installation in touch tables or as an integral part of interior design - for example installed in doors - is also possible.



## THE STREAMING SOLUTIONS

eyevis streaming solutions are the professional tools for the distribution of video signals over standard network (TCP/IP). With the high-end eSTREAMER solution, which provides broadcast quality transmission, the video signal is transformed by a device in encoder mode into a network stream. At any place within the network the stream can be decoded again by a second eSTREAMER in decoder mode which then provide it as a DVI signal again.

Compared to a mere DVI transmission this solution offers several significant advantages. Besides the less extensive cabling it is also possible to transmit audio signals over the network. For networks with a more limited bandwidth, the alternative eyeGATE solution enables the transmission of DVI/HDMI signals using an H.264 compression.

WORKING WORLDWIDE  
CUSTOMERS WHO TRUST IN EYEVIS TECHNOLOGY.

# PERFECT VISUAL SOLUTIONS



## A SMALL SELECTION OF FURTHERS CUSTOMERS WITH KNOW-HOW FROM EYEVIS

- **Babolat Showroom at French Open 2013 – Paris, France**  
9x omniSHAPES (DLP® rear-projection units with LED projection technology, racket-shaped setup)
- **Bank of New York, Trading Room – New York, USA**  
172x omniSHAPES (DLP® rear-projection units with LED projection technology)
- **Federal Ministry of Health, Atrium/Press Conference Room – Berlin, Germany**  
9x EYE-LCD-4600-SN-V2 (46" video wall LCD)
- **German Stock Exchange, Foyer - Eschborn, Germany**  
70x EYE-LCD-4600-SN-V2 (46" video wall LCD), 2x netPIX 4820 (redundant high-end graphics controller for the display of multiple video and graphic sources)
- **Private Wedding Party in Taipei – Taipei, Taiwan**  
52x omniSHAPES (DLP® Rear-Projection Units with LED projection technology, setup reassembling Chinese symbol for "Double Happiness")
- **Mercedes Museum, Video Wall in the "Fascination of Technology" Sector" – Stuttgart, Germany**  
48x EYE-LCD-4600-SN-V2 (46" video wall LCD)



- **Muséum d'Histoire Naturelle de Marseille, Video Wall in the Natural History Museum – Marseille, France**  
16x EYE-LCD-5500-M-USN-LD (55" video wall LCD with Direct-LED backlight), 1x EYE-LCD-CAS (LCD colour adjustment system)
- **Shanghai General Motors, Corporate Showroom – Shanghai, China**  
230x EYE-LCD-4600-LE (46" Full HD LCD monitors with Edge-LED backlight)
- **Siemens Corporate Technology, Conference Room – Perlach, Germany**  
12x EC-50-LXT (50" XGA DLP® rear-projection cube with LED projection technology), 1x netPIX 4812 (high-end graphics controller for the display of multiple video and graphic sources), 1x eyeCON Wall Management Software (video wall management software)
- **National Museum for Egyptian Arts, Touch-Display Tables – Munich, Germany**  
24x squareTILES (quadrilateral 21.6" LCD modules)
- **Tourist Information Reutlingen, City-Info-Center StaRT – Reutlingen, Germany**  
1x EYE-LCD-4600-LE-TOUCH-6IR (46" Full HD LCD with Edge-LED backlight and multi-user touch-overlay),  
1x EYE-LCD-4600-LE (46" Full HD LCD with Edge-LED backlight, customized installation with capacitive touch foil on window)
- **Telefónica Digital Headquarters, Video Wall in Foyer – London, United Kingdom**  
28x omniSHAPES (DLP® rear-projection units with LED projection technology, chess board setup)



#### **EYEVIS MAIN OFFICE**

- Germany – Reutlingen

#### **PRODUCTION LOCATION**

- Germany – Reutlingen

#### **EYEVIS OFFICES INTERNATIONAL**

- Germany – Reutlingen
- France – Paris/Saint-Affrique
- Great Britain – Burnley
- Italy – Rome
- Austria – Vienna
- Poland – Kattowitz
- Russia – Moscow
- Scandinavia – Gothenburg (Sweden)
- Spain – Madrid
- South Korea – Seoul
- South-East Asia – Petaling Jaya (Malaysia)
- United Arab Emirates – Abu Dhabi

#### **DISTRIBUTION PARTNERS**

- Africa
- Australia
- China
- Europe
- Japan
- Latin America
- USA

Updated information on our projects and products with many photos as well as the possibility of communicating with other interested customers can also be found at:

- [twitter.com/eyevis](https://twitter.com/eyevis)
- [www.facebook.com/eyevis](https://www.facebook.com/eyevis)
- [www.linkedin.com/companies/eyevis](https://www.linkedin.com/companies/eyevis)



Scan the QR code and visit our website to find more detailed information on all of our products and services, download brochures and data sheets, or watch the product videos.

#### **eyevis GmbH**

Hundsschleestr. 23  
72766 Reutlingen  
Germany

Tel.: +49 (0) 71 21 - 4 33 03-0  
Fax: +49 (0) 71 21 - 4 33 03-22

Web: [www.eyevis.com](http://www.eyevis.com)  
E-Mail: [info@eyevis.de](mailto:info@eyevis.de)